



TRANSWESTERN

REAL ESTATE
SERVICES

IN SUPPORT OF A HEALTHY WORKPLACE

SPEAKERS:



Chris Pyke

Sr. Vice President
ArcSkoru, Inc.
cpyke@arcskoru.com



Al Skodowski

Principal
Rivion
414.937.5023
al.skodowski@rivion.com



Jaclyn Whitaker

Sr. Vice President
International WELL Building Institute
859.421.2756
jaclyn.whitaker@wellcertified.com



Katie Sakach

Managing Director
Asset Services
Transwestern Real Estate Services
512.314.3558
katie.sakach@transwestern.com



Arc Re-Entry

Supporting the safe and confident re-entry of facilities.



Five Questions

- What is Arc?
- What is Arc Re-Entry?
- Who can use it?
- How does Arc Re-Entry work?
- Where do I start?

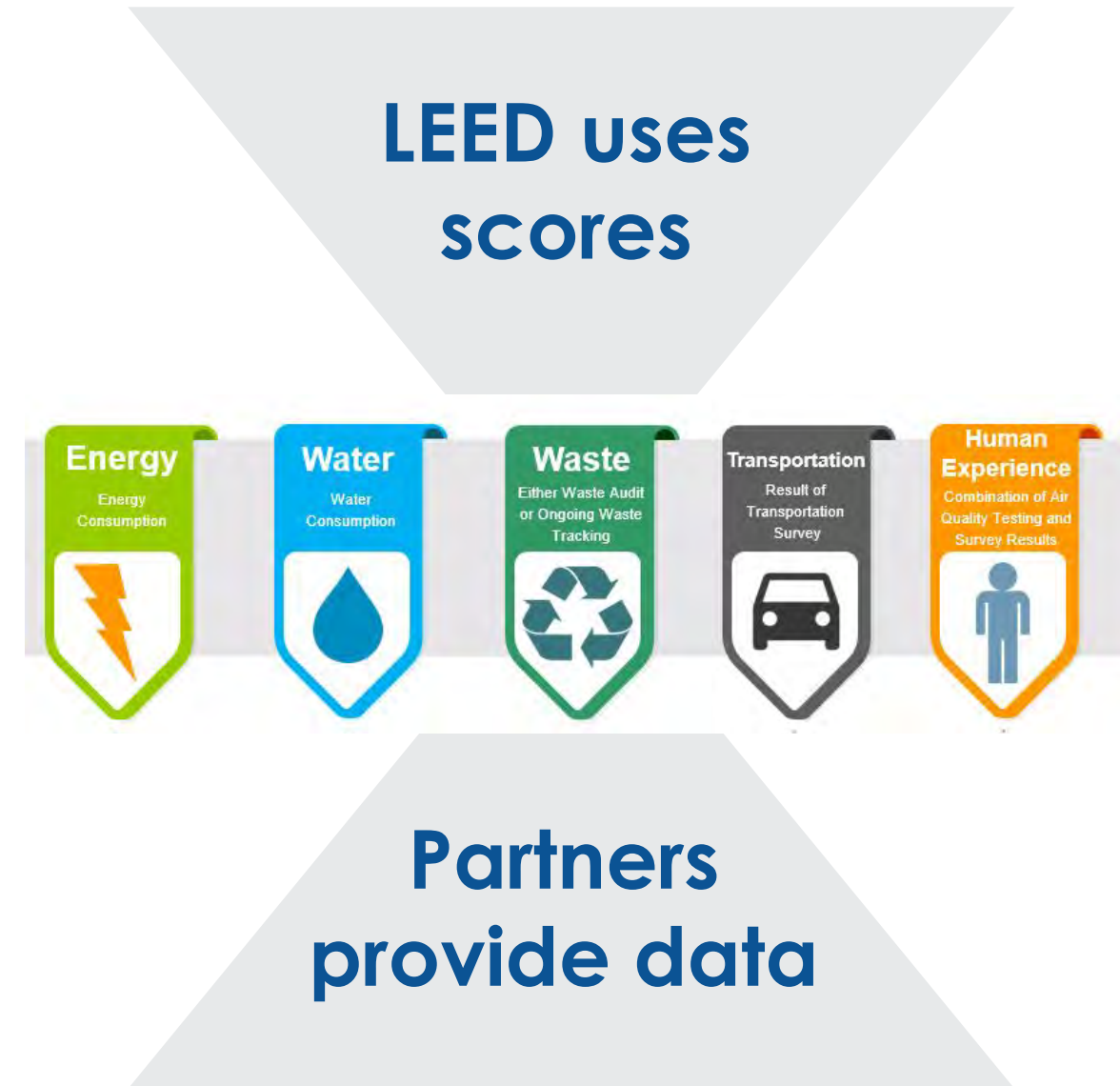
What is Arc?

Part of the USGBC and GBCI family of organizations.



Arc Powers LEED

Arc provides scores for LEED certification and recertification.

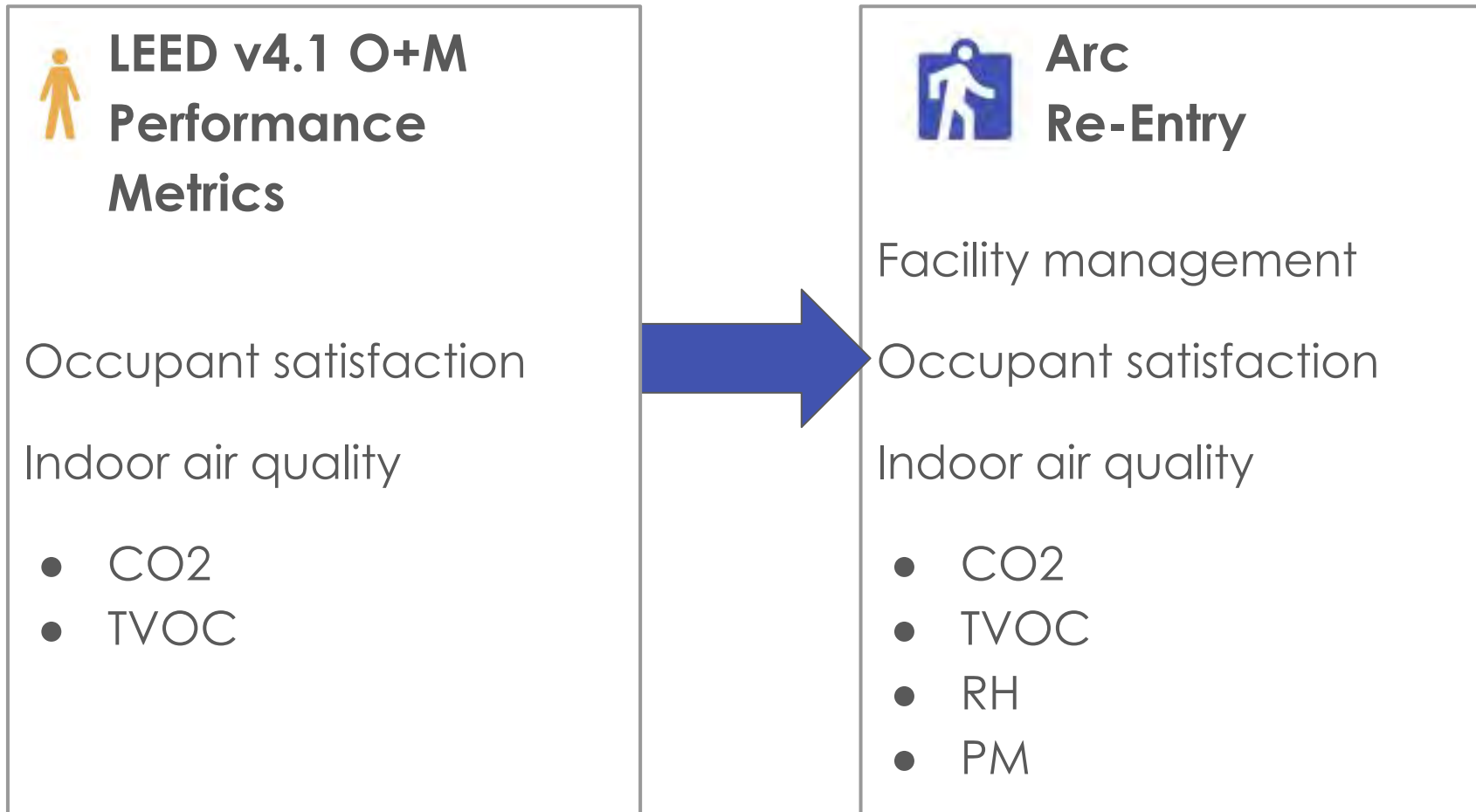


Arc Tools

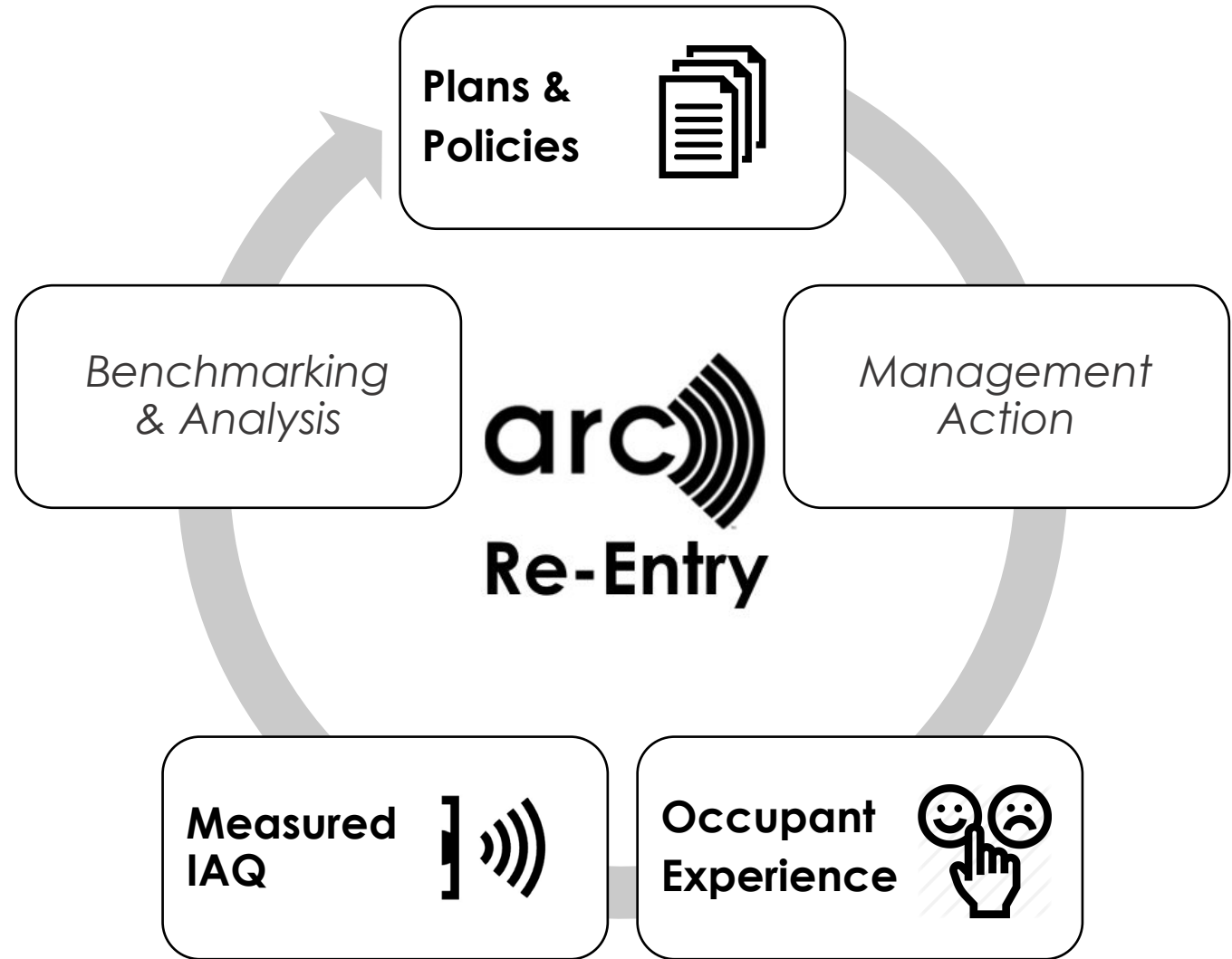
- Measure and score performance - for free
- Recognize incremental achievements or performance in a single category
- Streamline LEED (re)certification



What is Arc Re-Entry?



Arc Re-Entry Powers a Management Process



**Who can use
Arc Re-Entry?
When?**

Anyone.

Anywhere.

Now.

Private Firms

www.arcskoru.com/articles

5 tips from a practitioner in applying Arc Re-Entry

Author: Kristen Fulmer, Recipric

Published on: Monday, July 20, 2020



The long-term realities of COVID-19 have begun to set in and the associated reopening have evolved from urgent concerns to hopeful opportunities.



Public Venues

www.arcskoru.com/gsa-reentry





Facility Management
Occupant Experience
Indoor Air Quality



Issue-specific guidance,
ratings, accreditation



Third-party certification
with multi-criteria
leadership standards

Details

1. Facility management
2. Occupant experience
3. Indoor air quality

Facility Management

ONE TIME SURVEY + UPDATES

1. Infection control plans and policies
2. Alignment with public health authorities
3. Management strategies
 - Occupant communication and signage
 - Cleaning and disinfection
 - Occupant screening
 - Ventilation and outdoor air supply
 - HVAC operations
 - Elevator operations
 - Water system operations



Growing list of public health authorities

- ASHRAE
- ISHRAE
- CIBSE
- BOMA
- Local government
- International WELL Building Institute
- U.S. Green Building Council
- U.S. Centers for Disease Control
- U.S. Environmental Protection Agency
- World Health Organization
- *More each day*

Occupant Observations

REPEAT PERIODICALLY

Scope

- Common space
- Tenant spaces
- Whole building

Group

- Employees
- Tenants
- Visitors

Overall experience

- Occupant satisfaction

Observations about strategies

- Disease control signage
- Occupant screening
- Disinfecting products
- Social distance



3. Do you see disease control communication and signage?



Indoor Air Quality

MEASURE FREQUENTLY

Relative Humidity

- Disease transmission/susceptibility proxy

CO2

- Ventilation proxy

TVOC

- Cleaning and indoor pollutant proxy

PM

- HVAC operation proxy



Air quality data are:

- Optional
- Entered manually
- Provided by sensors

Integrated partners include:

- arbnco
- Schneider Electric
- QLEAR
- *More coming soon*

Benchmark & Analyze Performance

Overview

Performance

Meters & Surveys

Models

Leadership

Reports

Manage

Performance

How scores and metrics work ?

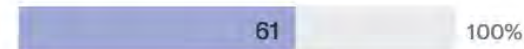
Total Energy Water Waste Transportation Human Experience Emissions **Re-Entry**

Re-Entry

Comprehensiveness Score

31 days ending May 12, 2020

 **61%**



Breakdown

Facility Management: **18%**

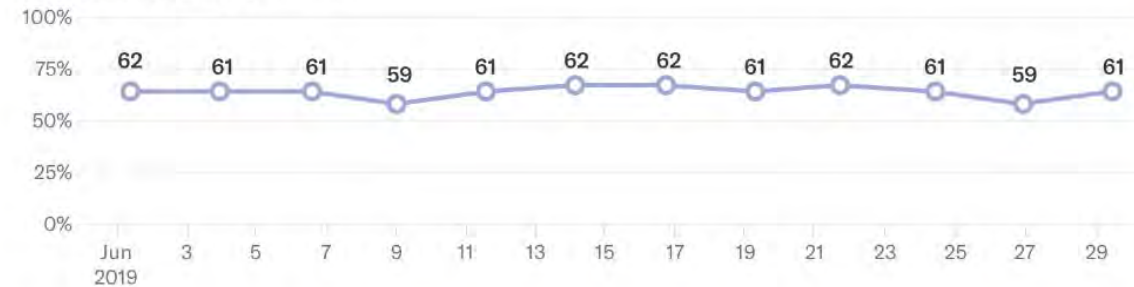
Occupant Observations: **24%**

Indoor Air Quality: **18%**

Monthly average Arc Re-Entry Completeness Score

— Last 31 days

Comp Score Percentage of maximum



Upgrade to Arc Essentials

Use advanced features to improve performance.

[Get Arc Essentials](#)

[Learn more](#)



Scorecard & Report

A detailed summary of practices and performance.



Arc RE-ENTRY REPORT - Jun 18, 2020

USGBC Headquarters

2101 L Street NW, DC 20037

Report created on Jun 18, 2020

Data for May 19, 2020 through Jun 18, 2020

Score details

Facility management

Last response: May 19, 2020

Measure	Response	Documentation
Disease control plans, policies, and procedures	✓ Yes	✓ View
Occupant communication and signage strategy	✓ Yes	✓ View
Enhanced cleaning and infection strategy	✓ Yes	✓ View
Occupant screening strategy	✓ Yes	✓ View
Social distancing strategy	✓ Yes	✓ View
Building system operations strategy	✓ Yes	✓ View

Occupant observations

Last response: May 19, 2020

Survey	Response	Avg. Total Responses
Occupant Survey	✓ Yes	23

IAQ

April XX, 2020 through May XX, 2020

Meters	Response
Relative Humidity	✓ Yes
Carbon Dioxide	✓ Yes
TVOC	✓ Yes
PM 1.0	✓ Yes
PM 2.5	✓ Yes
PM 10	✓ Yes

More Details

www.arcskoru.com → Resources



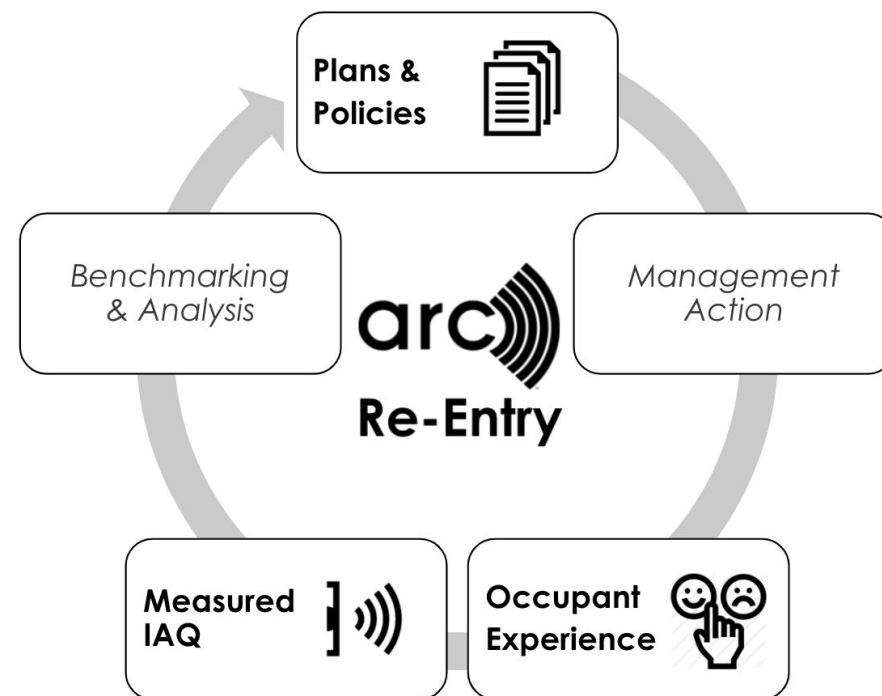
Guide to Arc Re-Entry

Version 1.1 — June 2020

Now What?

Right now

- Any Arc user can collect, manage, and score re-entry data - for free.
- Arc Essentials users have tools to compare performance and create scorecards and detailed reports



What's Coming Up?

Next month

- Manage Re-Entry data across whole portfolios.
- Generate customized portfolio-level reports and analytics

Showing: 7 of 7 Projects

Performance Weighted Score ▾ Sort ▾

Energy - of 33 Water - of 15 Waste - of 8 Transportation - of 14 Human Experience - of 20
Base Points - of 10

NAME	SCORE	
USGBC Headquarters	77	<div><div>26</div><div>9</div><div>8</div><div>12</div><div>12</div><div>10</div></div>
Arc Scoring Demonstration Project	68	<div><div>31</div><div>13</div><div>4</div><div>10</div><div>10</div></div>
My Workplace	31	<div><div>31</div></div>
My First Arc Project	22	<div><div>15</div><div>7</div></div>
My Demo at Alliance Center	0	
My Portland Project	0	
Hottgenroth	0	

Get Started

1. Login to ArcSkoru.com to create or claim a project
2. Collect information from facility managers and occupants; enter IAQ data or connect sensors.
3. Review Comprehensiveness Scores and analytics.

Repeat the process to monitor conditions and improve over time.

Learn more

Explore www.ArcSkoru.com/re-entry

Read www.ArcSkoru.com/getting-started-arc-re-entry

Email Chris Pyke cpyke@arcskoru.com



Prioritize health and safety in a post-COVID-19 world with the third-party verified WELL Health-Safety Rating

IWBI HEALTH & WELLNESS PROGRAMS



WELL
CERTIFICATION



PROFESSIONAL
ACCREDITATION



MEMBERSHIP
PROGRAM



WELL
PORTFOLIO



WELL HEALTH-
SAFETY RATING

INTERNATIONAL WELL BUILDING INSTITUTE

The organization that oversees the world's premier framework for advancing health in buildings and spaces of all kinds: the WELL Building Standard (WELL).

4,300+

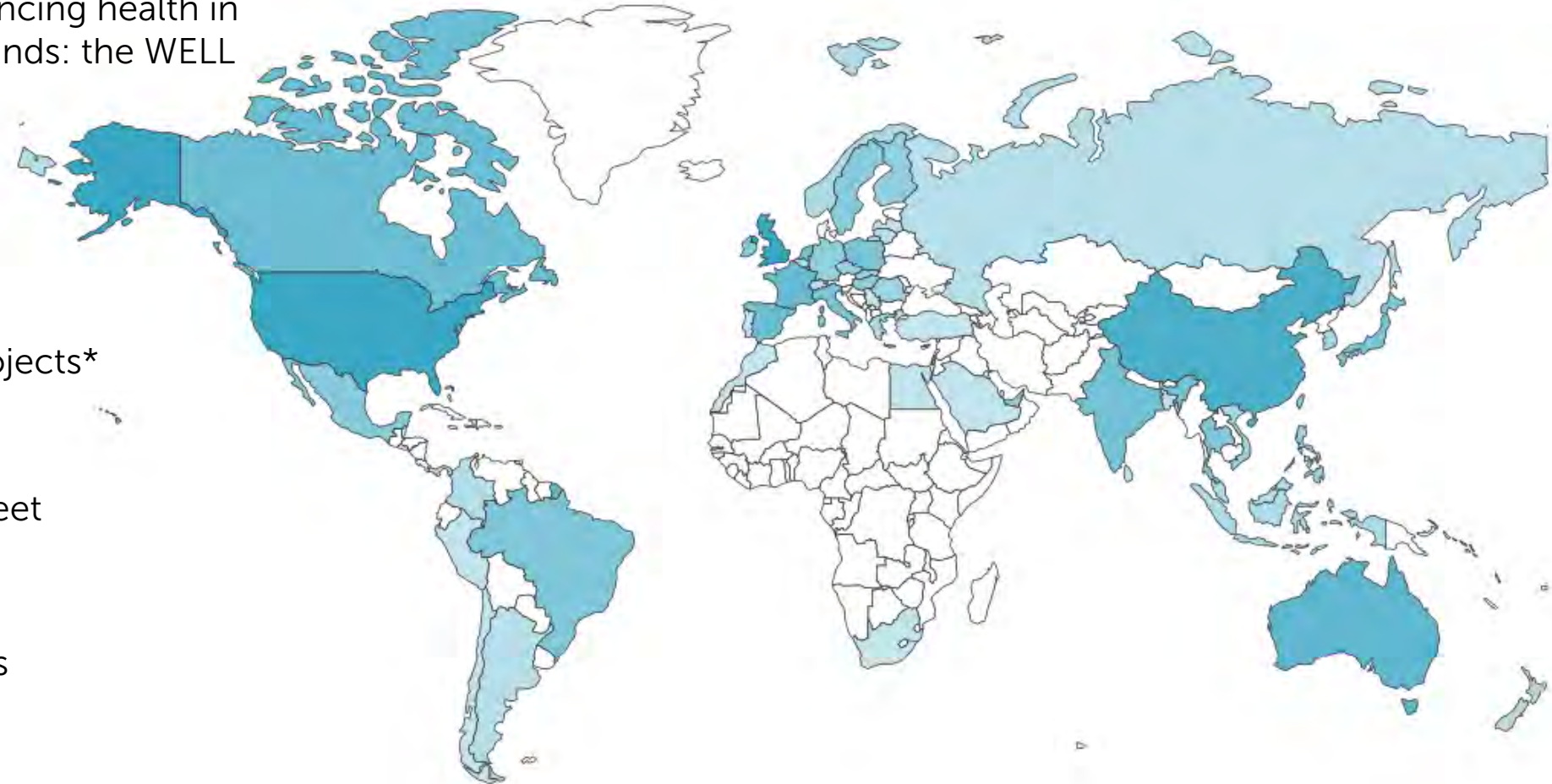
WELL projects*

610M+

Square Feet

62

Countries



*Includes WELL Certified, WELL Precertified and WELL registered projects

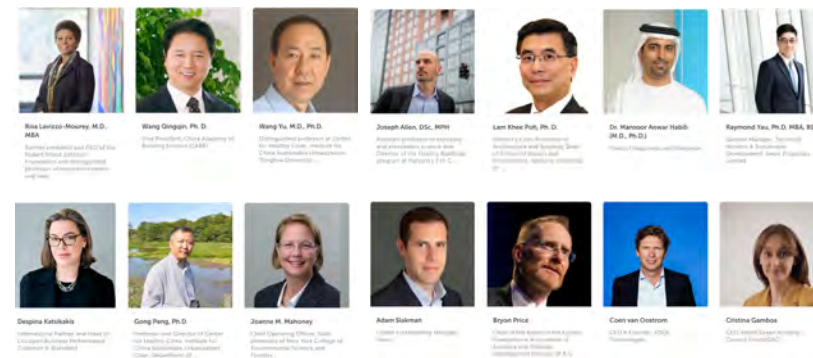
Copyright ©2020 International WELL Building Institute PBC. All Rights Reserved

EVIDENCE-BASED APPROACH TO HELP SUPPORT SPACES THAT ADVANCE HEALTH AND SAFETY

IWBI TASK FORCE

On COVID-19 & Other Respiratory Infections: Prevention and Preparedness, Resilience and Recovery

The genesis of the rating was feedback from the **IWBI Task Force on COVID-19**, a group of nearly 600 public health experts, virologists, government officials, academics, business leaders, architects, designers, building scientists and real estate professionals established in late March 2020 to inform IWBI's response to the pandemic.



INSTITUTIONAL KNOWLEDGE

Guidance on the spread of COVID-19 and other respiratory diseases developed by the World Health Organization (WHO), U.S. Centers for Disease Control and Prevention (CDC), global disease control and prevention centers, emergency management agencies, recognized standard-making associations, and leading academic and research institutions.

WELL BUILDING STANDARD

A sub-set of evidence-based strategies, adapted for facilities operations and management, from the WELL Building Standard

WELL ADVISORIES

Industry experts and researchers across the WELL Concept Advisories, the WELL Research Advisory, the WELL Advisory for Sports and Entertainment Venues, the WELL Advisory for Hotels and Resorts and the WELL Airport Advisory also provided extensive insights



The **WELL Health-Safety Rating** is an evidence-based, third-party verified rating focused on operational policies, maintenance protocols, emergency plans, and stakeholder education and engagement to address a post-COVID-19 environment now and broader health and safety-related issues into the future.



Operational Policies

Adoption of policies and procedures to facilitate a healthy and safe workplace or facility.



Maintenance Protocols

Implementation of facilities management and maintenance protocols designed to reduce the risk of infectious disease transmission.



Emergency Plans

Development of emergency plans and protocols that, when applied, help to safeguard building users.



Stakeholder Education and Engagement

Regular communications, education and signage that capture important updates, activities and information.

EARLY ADOPTERS

Meet some of the iconic buildings and leading organizations that have enrolled in the WELL Health-Safety Rating:

ACCIONA SA
Adventist Health
Aedifica
Alpin Limited (Masdar City)
American Savings Bank
Bartra Capital Property
CAMCO Management Co.
Carrier
Catalyst Partners
CBD Z03
CBRE Barcelona
CBRE Madrid
China Overseas Office Capital
Cleveland Clinic Courts / Cleveland Cavaliers
Climate Pledge Arena
Community Investment Strategies, Inc
CR Land
Deerns
Delos China
Delos Living LLC
Delta Electronics, Inc.
Denholtz Properties
Department of Earth System Science, Tsinghua University
Empire State Realty Trust
EMSI
GFP Real Estate

Ghelamco Poland Sp. z o.o.
Glenstar
GuocoLand China Ltd.
HBMSU
Heitman
Herman Miller Group
Hornets Sports & Entertainment - Spectrum Center
HRO
Infancix Co., Ltd
International Commerce Centre
International WELL Building Institute PBC
Ivanhoé Cambridge
Jiahui Health
JLL
Karisma Hotels and Resorts
Kilroy Realty Corporation
Kimball
Laguna
Lendlease Australia Office Portfolios: Australian Prime Property Fund Commercial, Lendlease International Towers Sydney Trust and Lendlease One International Towers Sydney Trust
Lincoln Property Company
M Moser Associates
Mace

Maple Leaf Sports & Entertainment (MLSE), which encompasses the Toronto Maple Leafs (NHL), Toronto Raptors (NBA), Toronto FC (MLS), & Toronto Argonauts (CFL)
Menarco Development Corporation
Milliken & Company
ML7
Montage International
Moody Center
National University of Singapore
New Belmont Arena
New York Yankees
Oak View Group
Out of the Box Ventures
Overbury Morgan Lovell
OVG Arena Alliance & Stadium Alliance
OVG Facilities
Pacers Sports & Entertainment: Bankers Life Fieldhouse (Indianapolis, Ind.)
Pacers Sports & Entertainment: St. Vincent Center/Indiana Pacers Training Facility (Indianapolis, Ind.)
Parmenter Realty Partners
Phipps Conservatory and Botanical Gardens
RMZ Corp
Rocket Mortgage FieldHouse / Cleveland Cavaliers & Cleveland Monsters

Royal Albert Hall
Rubrik India Pvt Ltd
Savanna
Serpentini Auto Group
Shanghai Lendleaf Architecture Technology Co. Ltd
ShouGang Group
Sino-Ocean
Space Matrix Design Consultants Pvt. Ltd
Spurs Sports & Entertainment
TAIPEI 101 Tower
Taiwan Architecture & Building Center
Teknion
The Florida Panthers and BB&T Center
The Forestias
The Related Group
Thornton Tomasetti
TITANIUM OFFICE SOLUTIONS MEXICO
Uber Technologies, Inc.
UltraStar Harrah's Ak Chin Resort Maricopa, Az.
United Center
Webster Bank Arena
Wells Fargo Center, Philadelphia, Pa.
Wolfgang Puck Fine Dining Group
Woonerf Inc.
Yuexiu Commercial

Why this rating matters **now**

Created in response to the COVID-19 pandemic and consisting of operational interventions that can be made to help mitigate its spread, including the five key themes covered in the rating:

- Cleaning and Sanitization Procedures
- Emergency Preparedness Programs
- Health Service Resources
- Air and Water Quality Management
- Stakeholder Engagement and Communication

CLEANING & SANITIZATION PROCEDURES

GET TO KNOW THE FEATURES

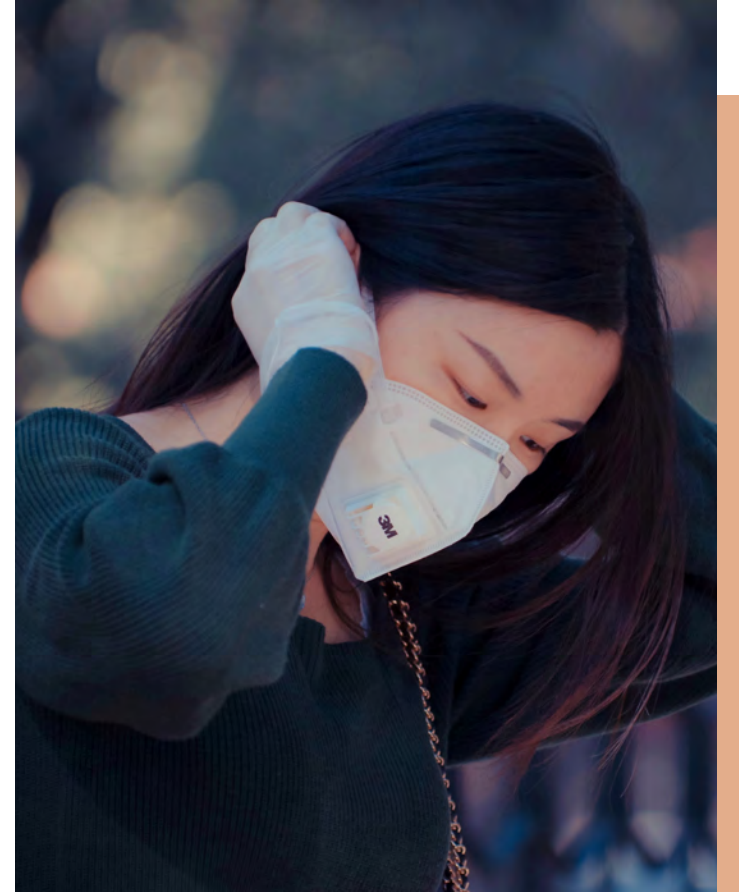


- Support Handwashing
- Reduce Surface Contact
- Improve Cleaning Practices
- Select Preferred Cleaning Products

EMERGENCY PREPAREDNESS PROGRAMS

GET TO KNOW THE FEATURES

- Develop Emergency Preparedness Plan
- Create Business Continuity Plan
- Plan for Healthy Re-Entry
- Provide Emergency Resources
- Bolster Emergency Resilience



HEALTH SERVICE RESOURCES

GET TO KNOW THE FEATURES



- Provide Sick Leave
- Provide Health Benefits
- Support Mental Health Recovery
- Promote Flu Vaccines
- Promote a Smoke-Free Environment

AIR AND WATER QUALITY MANAGEMENT

GET TO KNOW THE FEATURES

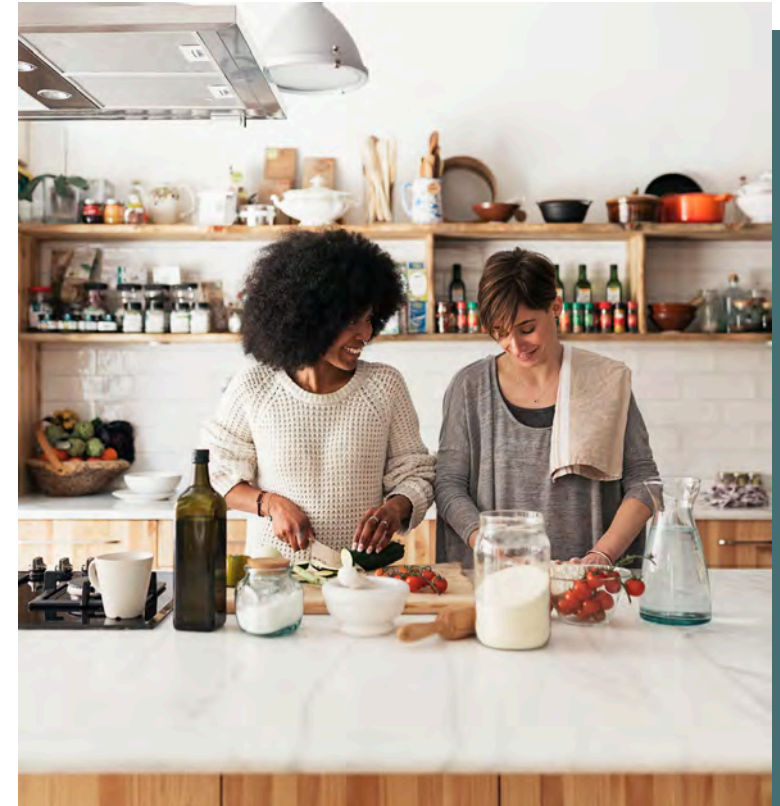


- Assess Ventilation
- Assess and Maintain Air Treatment Systems
- Develop Legionella Management Plan
- Monitor Air and Water Quality
- Manage Mold and Moisture

STAKEHOLDER ENGAGEMENT & COMMUNICATION

GET TO KNOW THE FEATURES

- Promote Health and Wellness
- Share Food Inspection Information



INNOVATION

This feature provides projects several options to go beyond features of the WELL Health-Safety, including proposing new interventions that address health and well-being in novel ways and achieving relevant design-based features from the WELL Building Standard.

WELL HEALTH-SAFETY / INNOVATION / FEATURES

Innovate WELL Health-Safety

Promote excellence in project design and continuous evolution of the WELL Health-Safety Rating

OVERVIEW

RESOURCE 0

VERIFICATION

SUMMARY

This feature provides projects several options to go beyond features of the WELL Health-Safety, including proposing new interventions that address health and well-being in novel ways and achieving relevant design-based features from the WELL Building Standard.

REQUIREMENTS

For All Spaces

Choose between the following:

Option 1: Innovation Proposal

The project submits a proposal that meets the following requirements:

- a. Consistent with applicable laws and regulations and leading practices in building design and operations.
- b. Substantiated by existing scientific, medical and/or industry research.
- c. Positively impacts project occupants or the general public through one of the below:
 - 1. Goes above and beyond the current requirements of an existing WELL Health-Safety Rating feature.
 - 2. Relates to acute health and safety in a novel way that is not already addressed in a WELL Health-Safety Rating feature.

YOUR WELL HEALTH-SAFETY JOURNEY



Enroll

Review the criteria and sign up to pursue the WELL Health-Safety Rating.



Customize Your Approach

Select the features that are relevant to your project.



Review

Upload documentation for third-party review by GBCI to confirm you've successfully met the feature-specific intent and requirements.



Achieve

Earn the WELL Health-Safety Rating and promote your achievement.



Renew

Apply for your annual seal to demonstrate ongoing commitment to upholding operational policies, maintenance protocols, emergency plans and stakeholder engagement.

PRICING

Standard locations

\$4,200 USD /location

Individual spaces/buildings not yet registered to pursue WELL Certification or subscribed in the WELL Portfolio program. Bulk pricing is available for locations having a single owner and applying streamlined documentation.

Projects already registered for WELL may also pursue the rating.
See pricing details for more information.

High-volume, multi-use locations

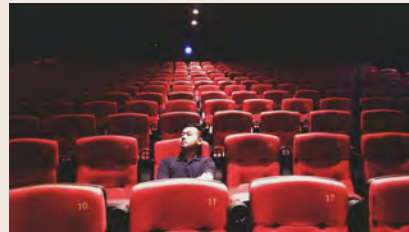
\$12,600 USD /location

High-volume locations are designed to accommodate more than 10,000 people daily and provide four or more distinct uses, such as retail, dining, entertainment, residential, lodging, offices, etc.
Examples: **stadiums, large hotel complexes, airports and shopping centers.**

APPLICABLE FOR ANY FACILITY TYPE



**Sports &
Entertainment**



Movie Theaters



Hotels & Resorts



Restaurants



Offices



Education



Retail



Multifamily



Industrial

and more.....

WELL HEALTH-SAFETY RATING: **REOPEN WITH CONFIDENCE**



FLEXIBLE: Applicable for large and small organizations alike across all facility types. Users can pursue the strategies that reflect their specific needs and goals, with the option to adjust their approach at each annual renewal.



SCALABLE: Provides a framework for helping organizations to efficiently develop, implement and validate health and safety protocols and plans across multiple properties with streamlined documentation pathways and scalable pricing.



VERIFIED: Anchored in third-party document review and annual verification of policies, protocols and strategies through Green Business Certification Inc. (GBCI), instilling confidence in an organization's stakeholders.



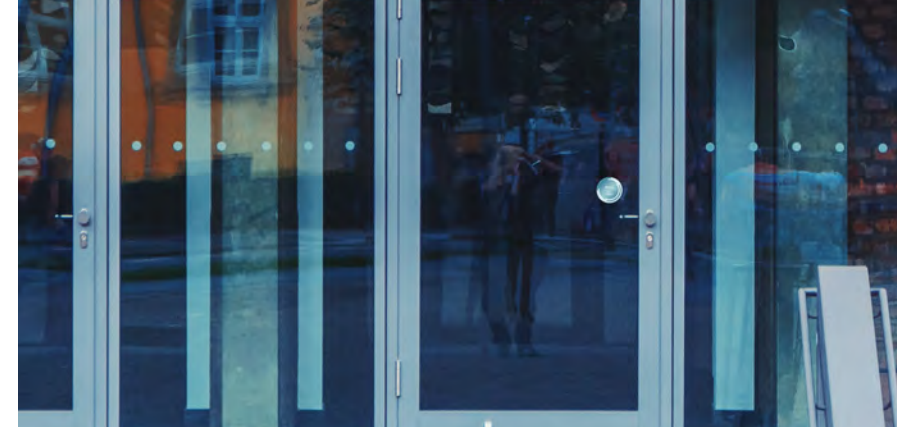
ACCESSIBLE: Priced for accessibility, with a focus on interventions that require little to no capital expenditure.

LOOK FOR THE SEAL



Communicate to Build Confidence

The WELL Health-Safety seal can be placed on every space that has earned the rating as a visual mark to indicate the work an organization has done to apply measures mapped to scientific evidence that help to support the health of individuals in a post-COVID-19 world.



Get in touch

healthsafety@wellcertified.com

wellcertified.com/health-safety

